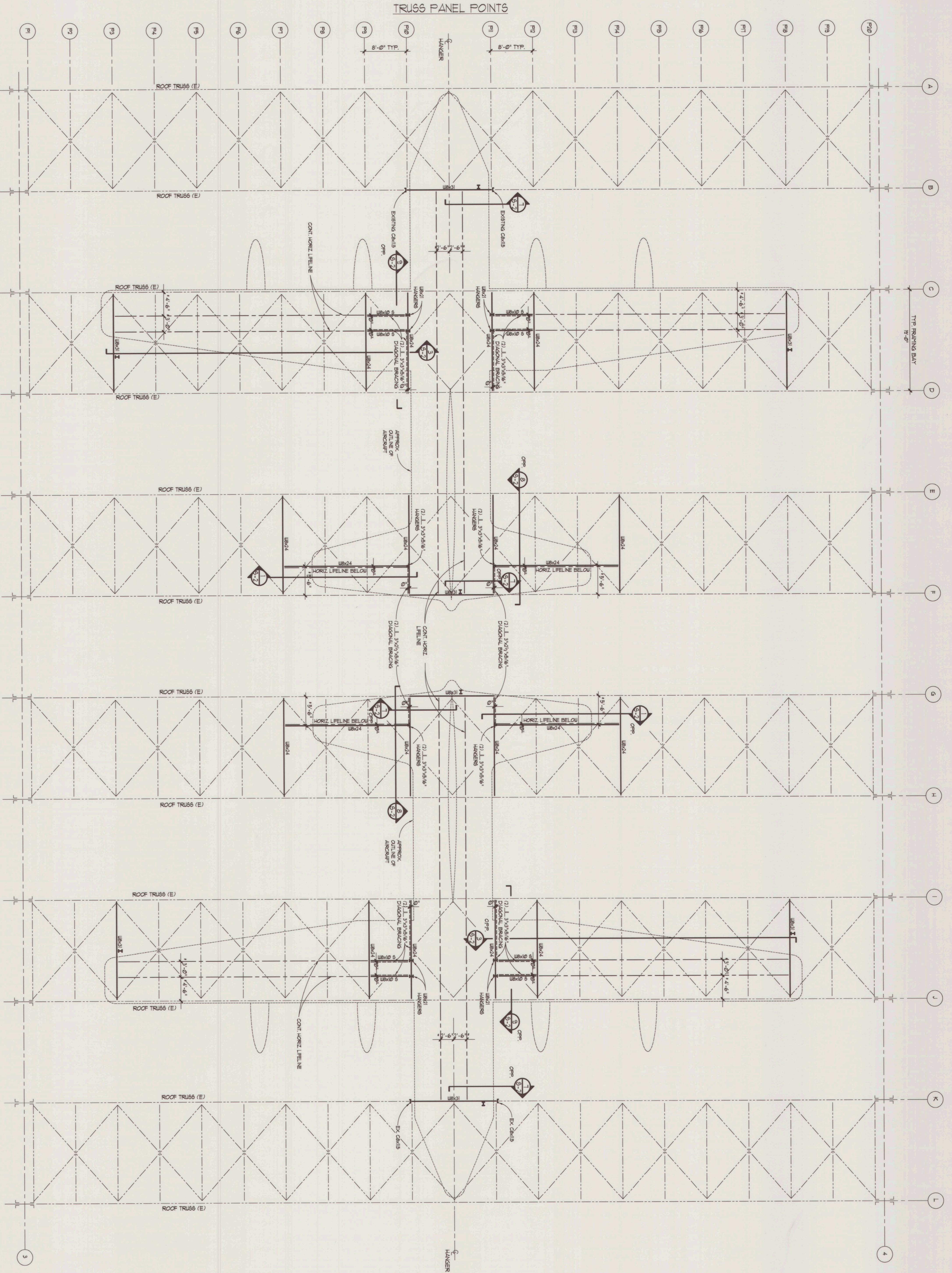


REVISIONS			
TR.	DESCRIPTION	PREP'D. BY	DATE



TRUSS PANEL POINTS

FRAMING PLAN AT EXIST. ROOF TRUSS BOTTOM CHORDS

SCALE: 1/8" = 1'-0"

- NOTES:
- EXIST FRAMING SHOWN LOCATED AT BOTTOM CHORDS OF EXIST. ROOF TRUSSES.
 - END ANCHORS AS SHOWN ON PLAN, INTERMEDIATE SUPPORTS AS REQ'D BY FALL PROTECTION CO. TO BE DESIGNED, LOCATED AND INSTALLED BY FP. CO.
 - TRUSS HORIZONTAL LIFE LINE, HLL, CONNECTION TO ANCHORS TO BE 3/4" & ROOF ON 2" RADIUS. FULLY WELD TO ANCHOR PARALLEL TO WEB OF SECTION. (1/4" WELD MIN)
 - HLL LOCATIONS ARE APPROX. CONTRACTOR TO COORDINATE W/OWNER PRIOR TO FABRICATION & CONSTRUCTION.
 - PROVIDE W/4-RED HEATER SHIELDS AT ALL INTERSECTIONS OF FALL PROTECTION SYSTEM END ANCHORS & INTERMEDIATE SUPPORTS.
 - ENTER FALL PROTECTION SYSTEM INCLUDING ANCHORS & INTERMEDIATE SUPPORTS TO BE INTERNATIONAL ORANGE OR SIMILAR LUMINESCENT COLOR APPROVED BY OWNER.
 - SLOPING BEAMS INDICATED BY 5°.
- FIELD VERIFY ALL DIMENSIONS AND LAYOUT WITH EXISTING BUILDING CONDITIONS.
 - DESIGN VERIFY ALL DIMENSIONS AND LAYOUT WITH EXISTING BUILDING CONDITIONS.
 - MAX. HORIZONTAL FORCE PER END ANCHOR - 6000 POUNDS (2 PEOPLE PER HLL).
 - MAX. VERTICAL FORCE - 6000 POUNDS (2 PEOPLE PER HLL).
 - SECTIONS AND DETAILS SHOWN WHILE DRAWING FOR SPECIFIC LOCATIONS, ARE INTENDED TO ESTABLISH THE GENERAL TYPES OF DETAILS TO BE USED THROUGHOUT. IF THE CONTRACTOR WISHES TO USE DETAILS OTHER THAN THOSE SHOWN ON THE DRAWINGS SUCH DETAILS SHALL BE SUBMITTED FOR APPROVAL, AND APPROVAL OBTAINED BEFORE SHOP DRAWINGS ARE COMMENCED.
 - DURING CONSTRUCTION, EXISTING CONDITIONS DO NOT AGREE WITH INFORMATION SHOWN ON DESIGN DRAWINGS, CONTRACTOR SHALL NOTIFY OWNER OF THESE DISCREPANCIES.

<p>GILMAN & HARTMANN, INC. P. O. BOX 345 VALLEY FORGE, PA. 19481</p>	<p>STRUCTURES, INC. 2 P.O. BOX 128 VALLEY FORGE, PA. 19481</p>	DATE	5-18-97
		CHECKER	JEK
A.F. DESIGN ACTIVITY AUTHENTICATION CONTRACT NO.		ENGINEER	JLB
SIZE A.F. CODE IDENT. NO. DRAWING NO. F ZAWA95-0020 S-1		A.F. PROJECT ENGR.	JLB
SCALE 1/8" = 1'-0" SPEC		CONTRACTOR	CONSTR. CONTR. NO.
U.S. AIR FORCE WILLOW GROVE AIR RESERVE FACILITY PENNSYLVANIA		SHEET 1 OF 2	